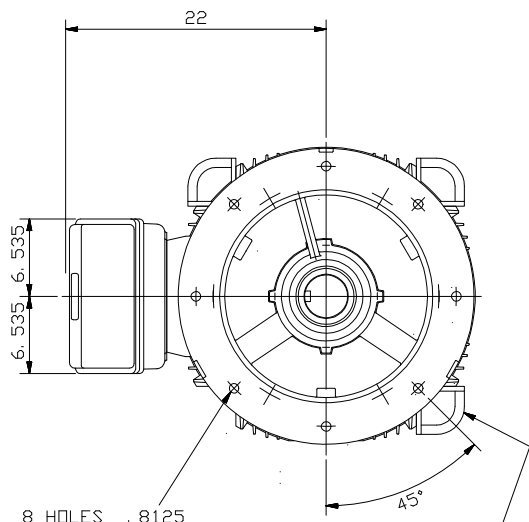
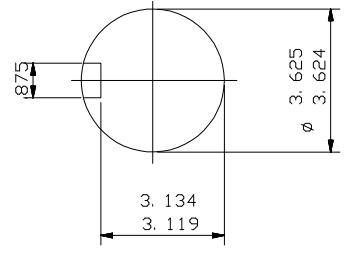


CABLE ENTRY  
SCREWED 3" N. P. T.



8 HOLES .8125  
EQUALLY SPACED  
ON 22 P. C. D.

THIS LIFTING LUG FITTED  
ONLY WHEN MOTOR IS  
VERTICALLY MOUNTED.



ENLARGED VIEW OF  
SHAFT EXTENSION

NOTE: -  
CABLE ENTRY CAN BE SUPPLIED IN  
ANY ONE OF FOUR POSITIONS AT  
90° INTERVALS.

NOTE: -  
STANDARD MACHINES ARE ARRANGED FOR HORIZONTAL OVERHUNG MOUNTING.  
CUSTOMERS SHOULD NOTIFY US WHEN ORDERING IF VERTICAL MOUNTING  
IS REQUIRED. IF VERTICAL, THE MOTOR THRUST BEARING MUST NOT BE  
ALLOWED TO TAKE ANY LOAD OTHER THAN THE WEIGHT OF THE ROTOR  
WITHOUT OUR APPROVAL.

CUSTOMER		
ORDER No.		
SERIAL No.		
FRAME SIZE		
HP	RPM.	
Hz	PHASE 3	
VOLTS	POLES	
BRGS.	DE.	NDE.
MOTOR NETT. WT.	Kg.	
INSULATION CLASS		
TEMPERATURE RISE °C		
DESIGN AMBIENT TEMPERATURE °C		
HEATER WATTS & VOLTS		
WATTS,	VOLTS	

REMARKS

**BROOK CROMPTON**  
PRELIMINARY

Large Industrial Motors  
Guiseley, LEEDS LS20 9NZ

ALL DIMENSIONS IN INCHES

THIRD ANGLE  
PROJECTION

**BROOK CROMPTON**

Large Industrial Motors  
GUISELEY, LEEDS, LS20 9NZ.

NOTE: -  
\* ENDPLAY WILL BE PROVIDED FOR ENDTHRUST  
PROTECTION WHEN CUSTOMERS NOTIFY US OF THEIR  
INTENTION TO USE RIGID COUPLINGS AND DRIVEN  
MACHINES WITHOUT ENDPLAY.

OUTLINE DIMENSIONS OF STANDARD D FLANGE MOUNTED INCH A. C. MOTOR  
TO NEMA STD. MG1. TOTALLY ENCLOSED FAN COOLED.  
FITTED WITH SIDE MOUNTED TERMINAL BOX  
FRAME SIZE :- W-DF505Z-N (4 POLE UP)

SCALE	1:10	DATE
DRAWN	B. J. T.	15.2.94
CHECKED	B. J. T.	15.2.94
APPROVED	I. J. W.	15.2.94

DRG. No.	M9538		
REVISION:	A SW	DATE	9. 8. 99